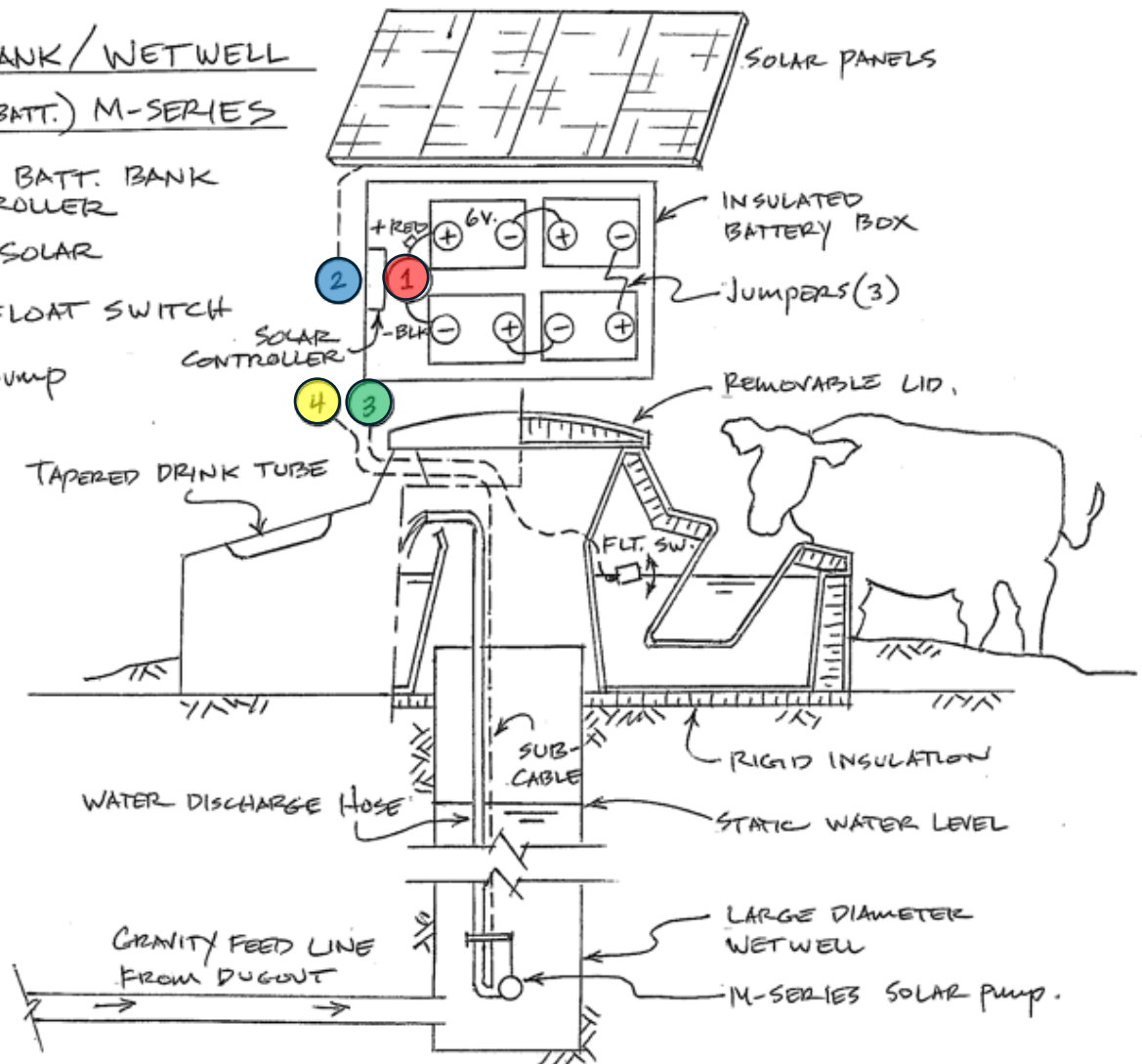


Capsule Wet Well System Set Up (M-Series Pump)

CAPSULE TANK / WETWELL
24V. (4-6V BATT.) M-SERIES

- ① CONNECT BATT. BANK TO CONTROLLER
- ② PLUG IN SOLAR
- ③ PLUG IN FLOAT SWITCH
- ④ PLUG IN PUMP



These systems can come in a variety of battery bank voltages. This is a 24v (4-6v battery) example. Can also come in 12v (2-6v), 12v (2-12v), 24v (2-12v), 36v (3-12v) 48v (4-12v).

Please see M-Series System Set up for full details.

This is a specific run-down for the Capsule and A Wet Well

Setting Up the Cap Solar "Capsule" with a Wet Well

Step 1: Prepare the Site

- **Locate the Wet Well:** Ensure the well is properly constructed and positioned where the Capsule trough will be placed.
 - **Confirm Water Depth & Flow:** Measure the static water level to ensure the well has enough supply for your livestock.
 - **Level the Base:** Clear and level the ground for stable placement of the Capsule trough.
 - Optional to fill in around the base
-

Step 2: Install the Water System

- **Lower the Pump into the Wet Well:**
 - Attach the flex hose outlet to the 2" hose barb adapter.
 - Hang the M-Series submersible pump upside down from the eyelet inside the wet well.
 - **Install the Water Discharge Hose:**
 - Attach the discharge hose from the pump outlet on the top of the well seal and place the hose into the holding tank of the capsule
 - Ensure the outlet of the pipe stays above the water tank to prevent backflow and cycling issues.
 - **Check the Float System:**
 - Adjust the float switch on the aluminum bracket so it shuts off the pump before overflow.
-